

Type SCC Dual IGBT Clamp-Snubber Modules

Style SCC

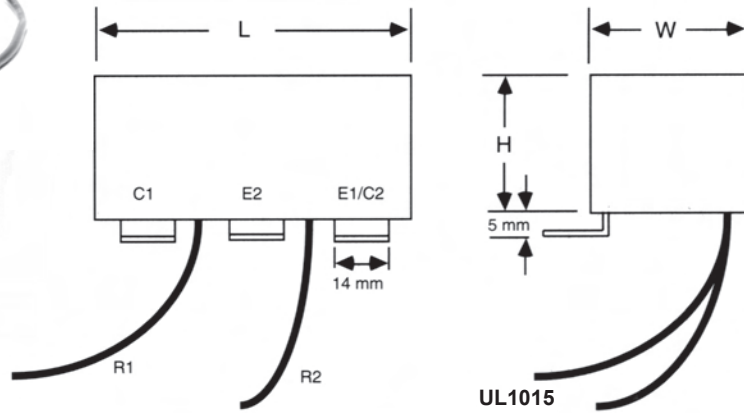


Highlights

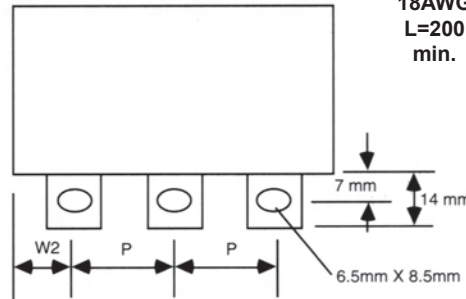
- ◆ Mount directly to the IGBT module
- ◆ Low inductance
- ◆ Low loss polypropylene dielectric
- ◆ High peak current
- ◆ Hyperfast diodes integrated into package
- ◆ Wire taps for connecting external resistors
- ◆ Flame resistant case and epoxy meet UL 94VO

Applications

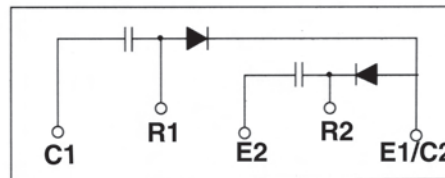
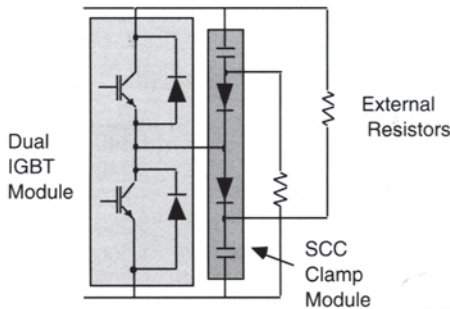
Style SCC is ideal for use in medium to high current applications where a dual IGBT module is used. This low loss snubber directly reduces turn-off voltage overshoots and is effective in reducing turn-on voltage transients.



UL1015
18AWG
L=200
min.



Complies with the EU Directive 2002/95/EC requirement restricting the use of Lead (Pb), Mercury (Hg), Cadmium (Cd), Hexavalent chromium (Cr(VI)), PolyBrominated Biphenyls (PBB) and PolyBrominated Diphenyl Ethers (PBDE).



Ratings

Catalog Part Number	Cap (μF)	Typical DUAL IGBT Ic/Vce	Diode Vrrm/I _f /trr(μs)	I _{pk} (A)		Dimensions (in./mm)									
				Tc = 25 °C	Repetitive 20 kHz Sq	W (in)	L (in)	H (in)	W2 (in)	P (in)	W (mm)	L (mm)	H (mm)	W2 (mm)	P (mm)
SCC105K601H7-24-F	1.00	100/600	600/30/.040	300	70	2.000	50.80	3.000	76.20	1.250	31.75	0.560	14.22	0.945	24
SCC155K601H7-24-F	1.50	200-300/600	600/30/.040	300	70	2.000	50.80	3.000	76.20	1.250	31.75	0.560	14.22	0.945	24
SCC205K601H5-24-F	2.00	400/600	600/50/.045	500	100	2.000	50.80	3.000	76.20	1.250	31.75	0.560	14.22	0.945	24
SCC205K601H5-28-F	2.00	400/600	600/50/.045	500	100	2.000	50.80	3.000	76.20	1.250	31.75	0.400	10.16	1.102	28
SCC474K122H8-24-F	0.47	100/1200	1200/30/.065	300	60	2.000	50.80	3.000	76.20	1.250	31.75	0.560	14.22	0.945	24
SCC474K122H8-28-F	0.47	100/1200	1200/30/.065	300	60	2.000	50.80	3.000	76.20	1.250	31.75	0.400	10.16	1.102	28
SCC105K122H8-24-F	1.00	150/1200	1200/30/.065	300	60	2.475	62.90	3.000	76.20	1.500	38.10	0.560	14.22	0.945	24
SCC105K122H8-28-F	1.00	150/1200	1200/30/.065	300	60	2.475	62.90	3.000	76.20	1.500	38.10	0.400	10.16	1.102	28
SCC155K122H4-24-F	1.50	200/1200	1200/50/.085	500	100	2.500	63.50	3.500	88.90	1.575	40.00	0.810	20.60	0.945	24
SCC155K122H4-28-F	1.50	200/1200	1200/50/.085	500	100	2.500	63.50	3.500	88.90	1.575	40.00	0.650	16.50	1.102	28
SCC205K122H4-24-F	2.00	300/1200	1200/50/.085	500	100	2.800	71.12	3.625	92.08	1.700	43.18	0.870	20.60	0.945	24
SCC205K122H4-28-F	2.00	300/1200	1200/50/.085	500	100	2.800	71.12	3.625	92.08	1.700	43.18	0.710	18.03	1.102	28